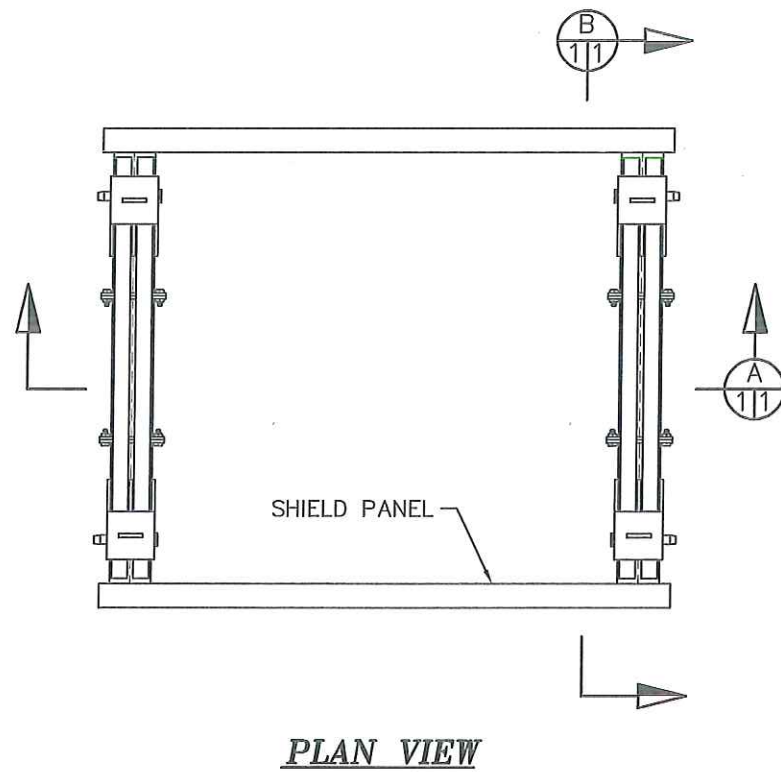


**ARCH SPREADER  
MANUFACTURER'S DRAWINGS**

**NOTES**

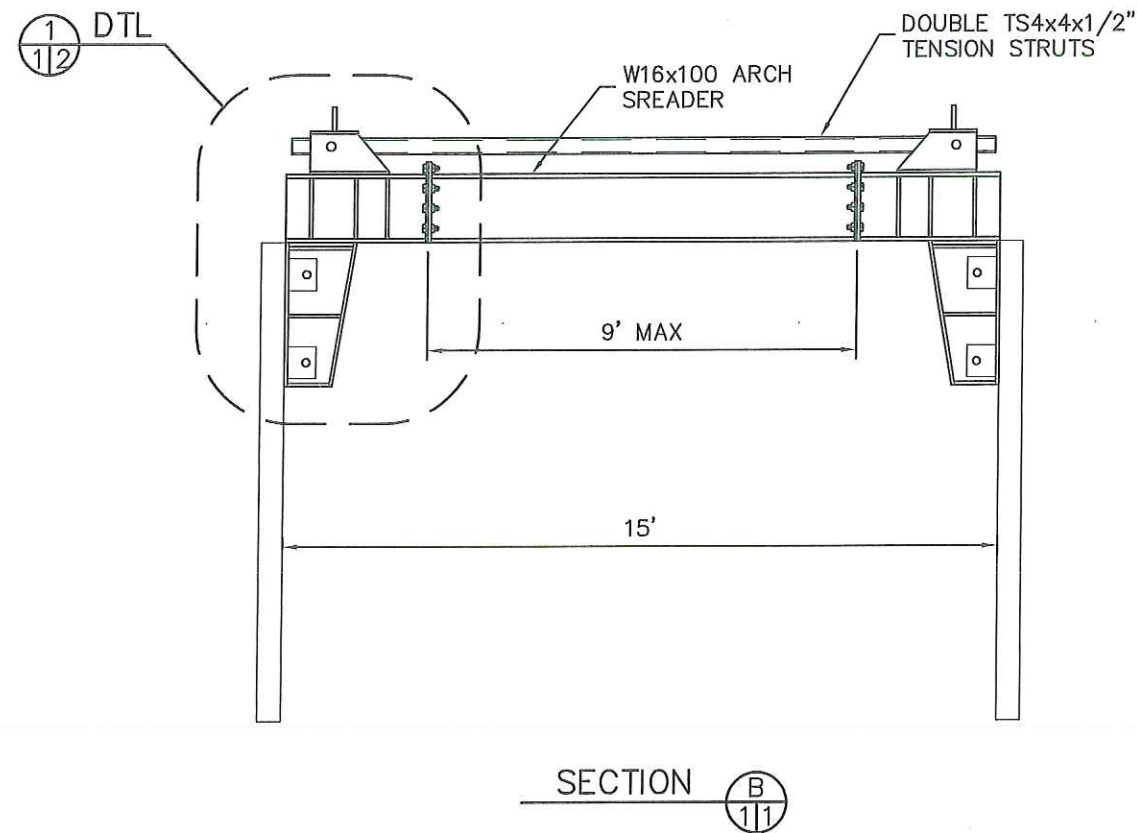
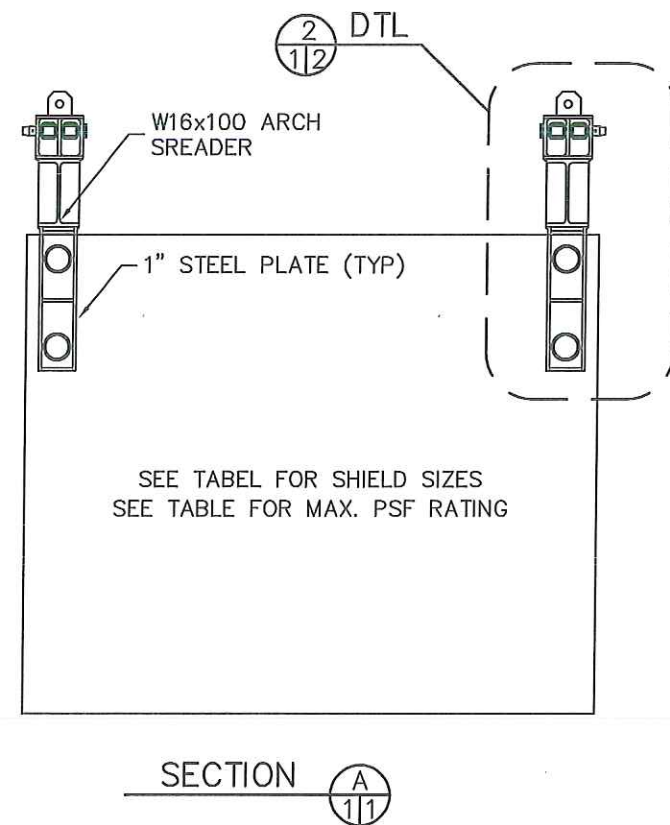
1. STEEL BEAMS TO BE ASTM A572 OR 992, MINIMUM Fy=50 KSI.
2. STEEL PLATES TO BE ASTM A572 OR 992, MINIMUM Fy=50 KSI.
3. STEEL PINS TO BE ASTM A572 OR 992, MINIMUM Fy=50 KSI.
4. TUBE STEEL TO BE ASTM A500 GRADE B, MINIMUM Fy=46 KSI.
5. BOLTS TO BE ASTM A325 OR BETTER.
6. WELDING TO BE IN ACCORDANCE W/ AWS D1.1. USE E70XX ELECTRODES.

REVISIONS	BY
08/09/21	AV
ARCH SPREADER MANUFACTURER'S DRAWINGS	
TTS	
<b>J.M. TURNER ENGINEERING, INC.</b> <b>CONSULTING ENGINEERS</b> 1325 COLLEGE AVE. SANTA ROSA, CA 95404 (707) 528-4503 FAX (707) 528-4505	
SCALE:	1/4" = 1'
DATE:	10/22/09
DRAWN BY:	S.H.J.
CHECKED BY:	A.J.V.
DRAWING NO:	18736-1/S1
SHEET:	1 OF 2



**MAX. PSF RATING TABLE**

SHIELD SIZE	MAX. PSF
8x12	2900
8x16	2200
8x20	1850
8x24	1550
10x10	2390
10x12	1990
10x16	1490
10x20	1190
10x24	990



REGISTERED PROFESSIONAL ENGINEER  
ADRIANUS J. VERMELEN  
No. 69082  
CIVIL  
STATE OF CALIFORNIA

8/19/2021

0 2' 4' 8'  
SCALE: 1/4" = 1'-0"

