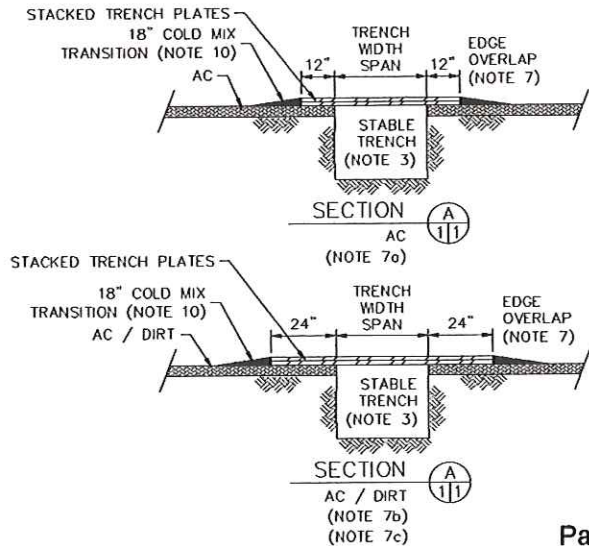
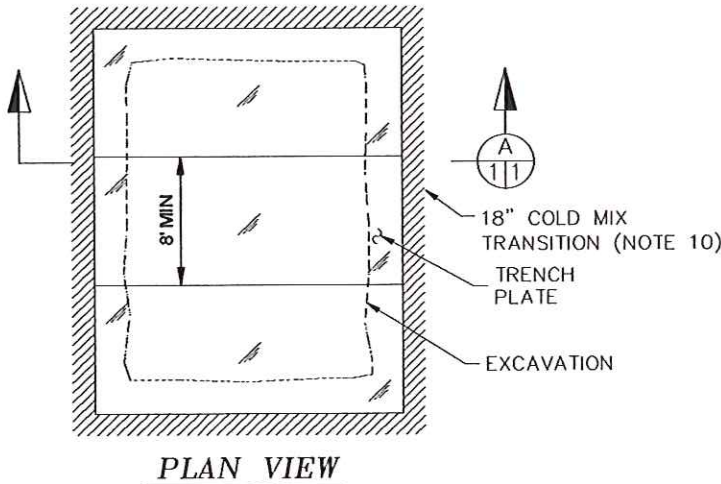


SACRAMENTO SHORING SUPPLY

MANUFACTURERS TABULATED DATA SHEET

STACKED TRENCH PLATES

HS-20-44 Loading (32,000 Lbs Axle)				
Max Allowable Trench Width Span				
Plate Thickness (in)	Max. Speed (mph)	A/C Note (2)	Dirt Note (2)	Design Impact Factor
1" Over 1"	≤ 25	9' - 9"	8'-6"	1.1
1" Over 1"	26-45	9'	8'	1.2
1" Over 1"	> 45	8' - 3"	7' - 3"	1.3
1" Over/Under 1.25"	≤ 25	12' - 6"	11' - 6"	1.1
1" Over/Under 1.25"	26-45	11' - 6"	10' - 6"	1.2
1" Over/Under 1.25"	> 45	10' - 6"	9' - 6"	1.3
1" Over/Under 1.5"	≤ 25	16'	15'	1.1
1" Over/Under 1.5"	26-45	14' - 6"	13' - 6"	1.2
1" Over/Under 1.5"	> 45	13' - 6"	12' - 6"	1.3
1.25" Over 1.25"	≤ 25	16'	15'	1.1
1.25" Over 1.25"	26-45	16'	15'	1.2
1.25" Over 1.25"	> 45	15' - 6"	14' - 6"	1.3
1.25" Over/Under 1.5"	≤ 25	16'	15'	1.1
1.25" Over/Under 1.5"	26-45	16'	15'	1.2
1.25" Over/Under 1.5"	> 45	16'	15'	1.3
1.5" Over 1.5"	≤ 25	16'	15'	1.1
1.5" Over 1.5"	26-45	16'	15'	1.2
1.5" Over 1.5"	≥ 45	16'	15'	1.3



2175 ACOMA STREET
SACRAMENTO, CA 95819
PH: (916) 920-3304



STACKED TRENCH PLATES

J.M. TURNER ENGINEERING, INC.
CONSULTING ENGINEERS



CIVIL ENGINEERING
STRUCTURAL ENGINEERING
CONSTRUCTION ENGINEERING

1325 COLLEGE AVE. SANTA ROSA, CA 95404
PH (707) 528-4503, FAX (707) 528-4505

DATE
01/19/16

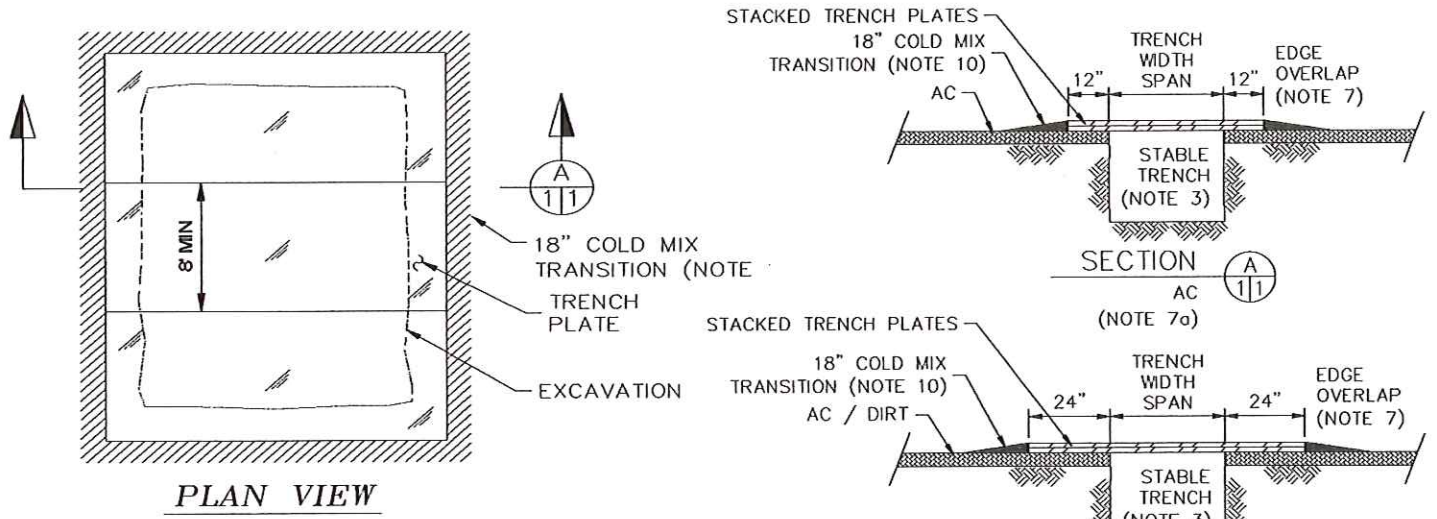
REVISED

Job #
14748-1

SACRAMENTO SHORING SUPPLY

MANUFACTURERS TABULATED DATA SHEET

STACKED TRENCH PLATES



Notes:

1. Plates are ASTM A36 MIN. Steel, $F_y = 36$ ksi.
2. Span or trench width is designed for HS-20-44 Loading. Any space exceeding table require engineering.
3. Chart is based on stable trench. Stability to be determined by competent person or engineer.
4. Plates must be placed with positive contact on all supporting surfaces as to prevent accidental movement from traffic deflection (cold patch can be used to displace any voids between the plate and supporting surface).
5. Plates may require anchorage when speeds exceed 45 mph or on slopes greater than 5% (In accordance with local requirements, competent person, or engineer).
6. Edge overlap shall be as follows:
 - a) Asphalt-Traffic speed under 45 mph; Trench Width + 24" min (12" EA. Per Side)
 - b) Asphalt-Traffic speed over 45 mph; Trench Width + 48" min (24" EA. Per Side)
 - c) Dirt-Traffic speed over 45 mph; Trench Width + 48" min (24" EA. Per Side)
7. Plates used on dirt with traffic speed exceeding 45 mph require engineering.
8. Plates used on A/C with traffic speed exceeding 55 mph require engineering.
9. There should be a minimum of 12" TO 1" gradient cold mix transition ramp all around.



2175 ACOMA STREET
SACRAMENTO, CA 95819
PH: (916) 920-3304



STACKED TRENCH PLATES

J.M. TURNER ENGINEERING, INC.
CONSULTING ENGINEERS

CIVIL ENGINEERING
STRUCTURAL ENGINEERING
CONSTRUCTION ENGINEERING

1325 COLLEGE AVE. SANTA ROSA, CA 95404
PH (707) 528-4503, FAX (707) 528-4505

DATE	REVISED	Job #
01/19/16		14748-1